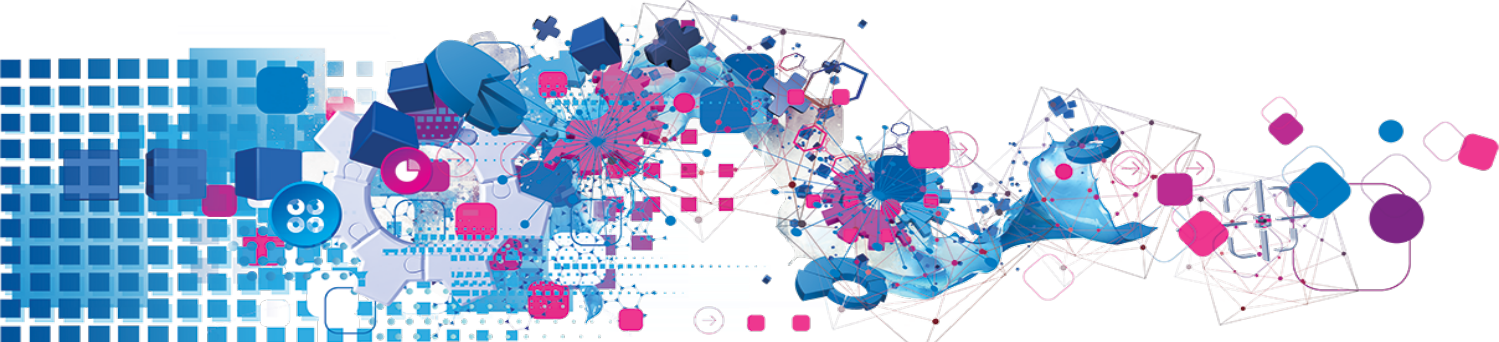


Tigerline



Disclaimer

E&OE. Information in this document is subject to change without notice. Experian Limited reserves the right to revise its products as it sees fit. This document describes the state of this product at the time of its publication, and may not reflect the product at all times in the future.

Use of this Product is subject to the terms of the Experian evaluation licence in the case of an evaluation, and to the Experian Licence Terms & Conditions in the case of full commercial use of the product, and will also be subject to Data Provider terms. By downloading, installing or using this product, you agree to comply with all the relevant terms. Please refer to these terms for all permitted uses and applicable restrictions on the use of the product.

The liability of Experian Limited with respect to the documentation and the licensed programs referred, are set out in that software licence agreement. Experian Limited accepts no liability whatsoever for any use of the documentation or the licensed programs by any person other than a permitted user under the software licence agreement.

Licensees shall not use the DPV technology to artificially compile a list of delivery points not already in Licensee's possession or to create other derivative products based upon information received from or through the DPV product technology.

Copyright

All copyright and other rights in this manual and the licensed programs described in this manual are the property of Experian Limited save for copyright in data belonging to United States Postal Service, Experian Marketing Solutions Inc, and all extracts, derivatives and updates. No part of this manual may be copied, reproduced, translated or reduced to any electronic medium or machine readable form without the written consent of Experian Limited.

United States address data is © United States Postal Service 2018. This information was published by Experian Limited, a company which holds a non-exclusive license from the United States Postal Service to publish data information. The price of said data is neither established, controlled or approved by the United States Postal Service. United States names data is © Experian Marketing Solutions Inc.

Microsoft, Word and Windows are trademarks of Microsoft Corporation.

© Experian Ltd. 1999-2018

USPS Trademark

Experian Marketing Services (EMS) is a non-exclusive NCOALink® Full Service Provider Licensee of USPS®. Prices for EMS/Products and services are not established, controlled or approved by USPS or the United States Government.

The following trademarks are owned by the United States Postal Service®: CASS™, CASS Certified™, DPV™, LACSLink™, NCOALink®, Post Office™, Postal Service™, The Postal Service™, US Postal Service™, U.S. Postal Service®, USPS, ZIP™, ZIP Code™ and ZIP + 4®.

This list is not exhaustive of the trademarks belonging to the Postal Service.

Contacts and Support

For resolutions to common issues, answers to frequently asked questions and hints and tips for using our products:

www.edq.com/documentation/contact-support/

For information about data expiry, data vintage and how to keep yours data up to date:

www.edq.com/documentation/data

For more information about us and to get in touch:

www.edq.com

Revision 1, October 2018

Contents

- Introduction 2**
 - What is a DataPlus Set? 2
 - Latitudes and Longitudes 2
- About This Data 3**
 - What is the USA Tigerline DataPlus? 3
 - Area Covered 3
- About DataPlus Information 4**
 - DataPlus Elements 4
 - Match Levels 4
 - Calculation of the Co-ordinates 5
 - Premise Match 5
 - ZIP Match 5
 - No Match 5
- How to configure TigerLine DataPlus for Core products 6**

Introduction

Filename:	usatrl.zip
Approximate Data Size:	6GB
Data Source:	United States Postal Service (USPS) All data, extracts and updates © USPS United States Census Bureau
Update Frequency:	Yearly
Expiry:	Data Files will expire 135 days after creation. Ensure every data update is applied promptly, otherwise the data may expire and the product will become unusable.

What is a DataPlus Set?

DataPlus is a product that enables you to retrieve specific data for an address. DataPlus can provide a wide range of information relating to an address, as a supplement to Pro/Batch. DataPlus information is contained in data sets. Each piece of information relates to a locality, ZIP code, or, when the Data requires higher resolution, to the Delivery point (letter box). DataPlus handles information in terms of a code and its related description (if there is one). For example, a data set containing co-ordinates would contain only codes.

Latitudes and Longitudes

Latitudes and longitudes are co-ordinates, based on degrees, used to describe a position on Earth.

Longitude lines are made by circles that intersect with both the North and the South Poles. Each longitude can be thought of as dividing the Earth in half. Longitudes are measured in half circles of 0° to 180° East and from 0° to 180° West from the Royal Greenwich Observatory in Greenwich, England.

Latitude lines are made by circles that run parallel to the equator, and grow progressively smaller as they get closer to the poles. Latitude is measured as an angle from the Equator of the Earth (0°) to the North Pole (90° North) or to the South Pole (90° South).

About This Data

What is the USA Tigerline DataPlus?

USATRL is pseudo DataPlus plus additional data file used in conjunction with USA data. The TIGER data is based on surveys carried out by the US Census Bureau. It returns latitude and longitude co-ordinates against premise level addresses and ZIP code data.

The TIGER DataPlus is designed to be used with Pro/Batch. When an address search is completed the DataPlus set provides latitude and longitude co-ordinates for that address.

Where there is no co-ordinate for a premise level address in the TIGER data, a centroid average is calculated and returned. If it is not possible to return to a ZIP match then no data is returned.

Area Covered

The TIGER data covers the United States of America.

About DataPlus Information

DataPlus Elements

The TIGER DataPlus set returns a maximum of three elements. The elements returned from the DataPlus set are as follows:

Name	Code	Description
Latitude	Latitude	The latitude, given to an accuracy of six decimal places. All latitudes in the USA are positive.
Longitude	Longitude	The longitude, given to an accuracy of six decimal places. All longitudes in the USA are negative.
TIGER/Line Match Level	MatchLevel	Specifies the accuracy of the coordinates for the specified address.

The following address returned by Pro:

300 Fig Tree Ct Jones
AL
36749

Will have this information attached:

Latitude: 32.504278
Longitude: -86.846033
Match Level: Premise

Match Levels

There are two different types of match level that can be returned. These are:

Name	Description
Premise	A specific address match has been achieved returning the interpolated Premise coordinates.
ZIP	Premise match was not available and instead the returned coordinates are the average coordinates for the ZIP code.

Calculation of the Co-ordinates

The TIGER data consists of start and end points of lines (roads). It therefore contains a start co-ordinate and an end co-ordinate for each line.

The following is a description of how the co-ordinates returned by the TIGER DataPlus set are calculated.

When an address is searched, for a given address, one of the following scenarios occurs:

- Premise Match
- ZIP Match
- No Match

Premise Match

A 'Premise' match occurs when an address is found in the TIGER data to the premise level. Coordinate extrapolation based on the TIGER start and end coordinates point for the street is performed, presuming that all discrete premises are actual addresses.

ZIP Match

When there are no TIGER records present for the address to the premise level, the DataPlus set will return average centroid coordinates for the ZIP, and the Match Level would be 'ZIP'. Average centroid coordinates are calculated from all of the address coordinates belonging to a ZIP code.

No Match

If there is no premise level data and no average centroid coordinates for the address ZIP, then no Tiger data is returned at all.

How to configure TigerLine DataPlus for Core products

1. Where should you put the TigerLine lib file?
 - Windows - put the TigerLine dll (**tigrln32.dll** or **tigrln64.dll**) in the Pro/Batch directory or configure the path to the dll in [QADefault] section of qawserve.ini:
TigerLineAPI=C:\Data\TigerLineData
 - AIX, Linux, Solaris - put the TigerLine lib (**libtigrln32.so** or **libtigrln64.so/libtigrln32.a** or **libtigrln64.a**) in the “lib” subdirectory of the Pro/Batch directory.
Note: The directory where you put the file should be added in the “Library Path” environmental variable (“LD_LIBRARY_Path” on Linux and Solaris, “LIBPATH” on AIX).

2. Specify the TigerLine data path in [QADefault] section of qawserve.ini:

```
TigerLineData=C:\Data\TigerLineData
```

3. Specify the TigerLine’s latitude and longitude fields in your layout (USATRL.Latitude and USATRL.Longitude):

```
USATRL.Longitude):
```

```
[USA DataPlus]
```

```
USAAAddressLineCount=8
```

```
USADDataPlusLines=3
```

```
USAAAddressLine1=W120
```

```
USAAAddressLine2=W120
```

```
USAAAddressLine3=W120
```

```
USAAAddressLine4=W120
```

```
USAAAddressLine5=W120I
```

```
USAAAddressLine6=W120,USATRL.Latitude
```

```
USAAAddressLine7=W120,USATRL.Longitude
```

```
USAAAddressLine8=W120,USATRL.MatchLevel
```

4. Run Pro/Batch using your new layout.