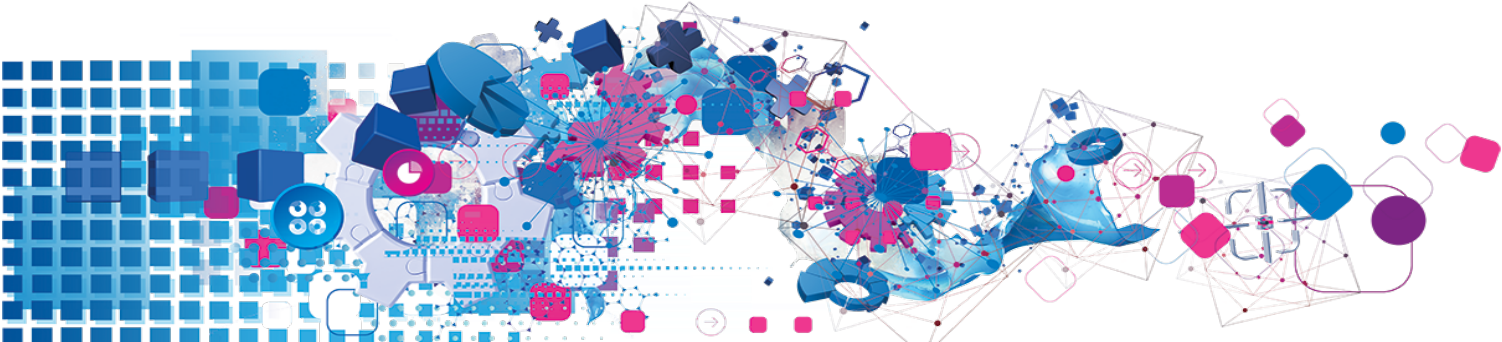


# Partner Sourced Datasets

---



## Copyright

All copyright and other rights in this manual and the licensed programs described in this manual are the property of Experian Ltd save for copyright in data in respect of which the copyright belongs to the relevant data provider.

No part of this manual may be copied, reproduced, translated or reduced to any electronic medium or machine readable form without the written consent of Experian Ltd.

Microsoft, Word and Windows are trademarks of Microsoft Corporation.

© Experian Ltd. 2021

## Contacts and Support

For resolutions to common issues, answers to frequently asked questions and hints and tips for using our products:

[www.edq.com/documentation/contact-support/](http://www.edq.com/documentation/contact-support/)

For information about data expiry, data vintage and how to keep your data up to date:

[www.edq.com/documentation/data](http://www.edq.com/documentation/data)

For more information about us and to get in touch:

[www.edq.com](http://www.edq.com)

Updated: November 2021

# Contents

<b>Introduction</b>	<b>4</b>
Partner Sourced Address Data Information	4
List Of Available Data Files	4
<b>About This Data</b>	<b>5</b>
Africa Bundle	6
Central America Bundle	8
East Asia Bundle	9
Eastern Europe Bundle	10
Middle East Bundle	11
South America Bundle	12
West Asia Bundle	13
Western Europe Bundle	14
Address Elements	15
Formatted Address Elements	16
Example Addresses	17
About DataPlus Information	18
DataPlus Sets for GLO Address Data	18
<b>Using This Data</b>	<b>22</b>
With Pro Web	22
Scenarios	22
Search Examples: Single Line	22
Search Examples: Verification	23

# Introduction

## Partner Sourced Address Data Information

Experian has improved the coverage of its data offering by expanding its partner networks. Our Primary Sourced datasets can now be supplemented by data from our trusted partners, which cover a much greater number of countries and regions worldwide. Experian remains committed to offering the highest quality data available. Details of the quality and depth of each dataset is provided in the chapter ["About This Data" on page 5](#).

Dataset Code:	GL	
Bundles Available:	<b>Region</b>	<b>Approximate Data Size</b>
	Africa	55MB
	Central America	170MB
	East Asia	321MB
	Eastern Europe	357MB
	Middle East	11MB
	South America	1.2GB
	Western Europe	498MB
	West Asia	492MB
Update Frequency:	Quarterly	
	Not all partner sourced datasets will have been updated by the data provider with each quarterly update, but it is recommended that you perform each of these data updates to ensure you are using up-to-date data.	
Expiry:	Partner Sourced datasets have no fixed expiry date. They will continue to work until your data licence runs out. You will need to renew each of your licences for Partner Sourced datasets at least every year. Ensure you receive and enter the new licence key(s) before your data becomes unusable.	

## List Of Available Data Files

File Extension	File Type	Comment
.md	Dataset	Main address data for each Partner Sourced dataset.

# About This Data

This chapter provides detailed information about the GLO datasets. Partner Sourced data is available in the following regional bundles:

- Africa;
- Central America;
- East Asia;
- Eastern Europe;
- Middle East;
- South America;
- Western Europe;
- West Asia.

Some Partner Sourced datasets are also available individually, depending on the contractual restrictions.

The following sections provide data coverage and quality information for all the Partner Sourced datasets within the data bundles. The level of address detail in each dataset is described in one of the following ways:

- **Locality**, where information in the dataset is available to locality level (or, if postal codes are used, to postal code level);
- **Limited Street**, where some street or premises information is available in the dataset (typically for the most densely populated areas);
- **Full Street**, where over 98% of the addresses covered by the dataset include street or premises information.

Due to the number of Partner Sourced datasets that are available, it is not possible to guarantee the accuracy of the information provided here.

## Africa Bundle

The Africa bundle contains the following 54 Partner Sourced datasets:

ISO Code	Areas Covered	Address Detail
DZA	Algeria	Locality
AGO	Angola	Locality
BEN	Benin	Locality
BWA	Botswana	Locality
BFA	Burkina Faso	Locality
BDI	Burundi	Locality
CMR	Cameroon	Locality
CPV	Cape Verde	Locality
CAF	Central African Republic	Locality
TCD	Chad	Locality
COM	Comoros	Locality
COD	Congo Dem. Rep. of Congo	Locality
COG	Congo	Locality
CIV	Cote d'Ivoire (Ivory Coast)	Locality
DJI	Djibouti	Locality
EGY	Egypt	Locality
GNQ	Equatorial Guinea	Locality
ERI	Eritrea	Locality
ETH	Ethiopia	Locality
GAB	Gabon	Locality
GMB	Gambia	Locality
GHA	Ghana	Locality
GIN	Guinea	Locality
GNB	Guinea-Bissau	Locality
KEN	Kenya	Locality
LSO	Lesotho	Locality
LBR	Liberia	Locality
LBY	Libyan Arab Jamahiriya	Locality
MDG	Madagascar	Locality
MWI	Malawi	Locality
MLI	Mali	Locality

ISO Code	Areas Covered	Address Detail
MRT	Mauritania	Locality
MUS	Mauritius	Locality
MAR	Morocco	Limited Street
MOZ	Mozambique	Locality
NAM	Namibia	Locality
NER	Niger	Locality
NGA	Nigeria	Locality
RWA	Rwanda	Locality
STP	Sao Tome and Principe	Locality
SEN	Senegal	Locality
SYC	Seychelles	Locality
SLE	Sierra Leone	Locality
SOM	Somalia	Locality
ZAF	South Africa	Locality
SDN	Sudan	Locality
SWZ	Swaziland	Locality
TZA	Tanzania	Locality
TGO	Togo	Locality
TUN	Tunisia	Locality
UGA	Uganda	Locality
ESH	Western Sahara	Locality
ZMB	Zambia	Locality
ZWE	Zimbabwe	Locality

## Central America Bundle

The Central America bundle contains the following 24 Partner Sourced datasets:

ISO Code	Areas Covered	Address Detail
ATG	Antigua and Barbuda	Locality
ABW	Aruba	Locality
BHS	Bahamas	Locality
BRB	Barbados	Locality
BLZ	Belize	Locality
BMU	Bermuda	Full Street
CYM	Cayman Islands	Locality
CRI	Costa Rica	Locality
CUB	Cuba	Locality
DMA	Dominica	Locality
DOM	Dominican Republic	Full Street
SLV	El Salvador	Locality
GRD	Grenada	Locality
GTM	Guatemala	Limited Street
HTI	Haiti	Limited Street
HND	Honduras	Locality
JAM	Jamaica	Locality
MEX	Mexico	Full Street
ANT	Netherlands Antilles	Locality
NIC	Nicaragua	Locality
PAN	Panama	Locality
KNA	Saint Kitts and Nevis	Locality
VCT	Saint Vincent and the Grenadines	Locality
TTO	Trinidad and Tobago	Locality



## East Asia Bundle

The East Asia bundle contains the following 25 Partner Sourced datasets:

ISO Code	Areas Covered	Address Detail
BGD	Bangladesh	Locality
BRN	Brunei Darussalam	Limited Street
KHM	Cambodia	Locality
CHN	China	Locality
PRK	North Korea	Locality
FJI	Fiji	Locality
HKG	Hong Kong	Full Street
IDN	Indonesia	Full Street
JPN	Japan	Full Street
KIR	Kiribati	Locality
LAO	Laos (People's Democratic Republic of)	Locality
MYS	Malaysia	Limited Street
MNG	Mongolia	Locality
MMR	Myanmar	Locality
NRU	Nauru	Locality
PNG	Papua New Guinea	Locality
PHL	The Philippines	Limited Street
WSM	Samoa	Locality
SLB	Solomon Islands	Locality
KOR	South Korea	Limited Street
THA	Thailand	Locality
TON	Tonga	Locality
TUV	Tuvalu	Locality
VUT	Vanuatu	Locality
VNM	Vietnam	Locality

Further data from this region is available in Primary Sourced datasets. Contact your account manager for more information.

## Eastern Europe Bundle

The Eastern Europe bundle contains the following 21 Partner Sourced datasets:

ISO Code	Areas Covered	Address Detail
ALB	Albania	Locality
BLR	Belarus	Locality
BIH	Bosnia-Herzegovina	Locality
BGR	Bulgaria	Locality
HRV	Croatia	Locality
CYP	Cyprus	Full Street
CZE	Czech Republic	Limited Street
EST	Estonia	Full Street
GRC	Greece	Limited Street
HUN	Hungary	Limited Street
LVA	Latvia	Limited Street
LTU	Lithuania	Locality
MKD	Macedonia	Locality
MDA	Moldova	Limited Street
MNE	Montenegro	Locality
POL	Poland	Full Street
ROU	Romania	Limited Street
RUS	Russia	Full Street
SRB	Serbia	Locality
SVK	Slovakia	Limited Street
SVN	Slovenia	Full Street
UKR	Ukraine	Limited Street

## Middle East Bundle

The Middle East bundle contains the following 13 Partner Sourced datasets:

ISO Code	Areas Covered	Address Detail
BHR	Bahrain	Locality
IRN	Iran	Locality
IRQ	Iraq	Locality
ISR	Israel	Locality
JOR	Jordan	Locality
KWT	Kuwait	Locality
LBN	Lebanon	Locality
OMN	Oman	Locality
QAT	Qatar	Locality
SAU	Saudi Arabia	Locality
SYR	Syria	Locality
ARE	UAE	Locality
YEM	Yemen	Locality

## South America Bundle

The South America bundle contains the following 12 Partner Sourced datasets:

ISO Code	Areas Covered	Address Detail
ARG	Argentina	Full Street
BOL	Bolivia	Locality
BRA	Brazil	Full Street
CHL	Chile	Limited Street
COL	Columbia	Locality
ECU	Ecuador	Locality
GUY	Guyana	Locality
PRY	Paraguay	Full Street
PER	Peru	Locality
SUR	Suriname	Locality
URY	Uruguay	Limited Street
VEN	Venezuela	Limited Street

## West Asia Bundle

The West Asia bundle contains the following 16 Partner Sourced datasets:

ISO Code	Areas Covered	Address Detail
AFG	Afghanistan	Locality
ARM	Armenia	Limited Street
AZE	Azerbaijan	Locality
BTN	Bhutan	Locality
GEO	Georgia	Locality
IND	India	Limited Street
KAZ	Kazakhstan	Locality
KGZ	Kyrgyzstan	Locality
MDV	Maldives	Limited Street
NPL	Nepal	Locality
PAK	Pakistan	Locality
LKA	Sri Lanka	Locality
TJK	Tajikistan	Locality
TKM	Turkmenistan	Locality
TUR	Turkey	Limited Street
UZB	Uzbekistan	Locality

## Western Europe Bundle

The Western Europe bundle contains the following 11 Partner Sourced datasets:

ISO Code	Areas Covered	Address Detail
AND	Andorra	Locality
AUT	Austria	Full Street
VAT	Holy See (Vatican City)	Full Street
ISL	Iceland	Limited Street
ITA	Italy	Full Street
LIE	Liechtenstein	Full Street
MLT	Malta	Limited Street
MCO	Monaco	Limited Street
PRT	Portugal	Full Street
SMR	San Marino	Locality
ESX	Spain	Full Street

Further data from this region is available in Primary Sourced datasets. Contact your account manager for more information.

## Address Elements

All Partner Sourced datasets use the same generic set of address elements. Many elements are not populated for all addresses. These generic elements are referred to by name when configuring address layouts or setting formatting options in Pro Web. See the Pro Web Installation And Administration Guide for more information about output address formatting settings.

The complete set of generic elements is as follows:

Element	Description
StreetAndHouse	Returns the house number and street name.
CombinedBuilding	Returned Building Address made up of one or more address elements, for example a BuildingName and SubBuildingName. These elements will be separated by a new line.
BuildingName	The returned building name, for example an office building containing several distinct offices.
SubBuildingName	The returned premise within a building, for example "Flat 23".
Organisation	The returned organisation name.
CombinedHouseNumber	A house number in its entirety - for example "3C".
HouseNumberOnly	The number element of a house number only, for instance "3".
CompleteStreet	Returns the house number and street name; identical to StreetAndHouse.
StreetName	Returns only the street name.
POBox	The regional word used in place of "PO Box" in UK addresses, and the POBox number.
POBoxNumber	The POBox number without the prefix word, for example "10071".
POBoxEverything	Includes the POBox element, the POBoxNumber and the POBoxAdditionalInfo elements combined.
POBoxAdditionalInfo	Additional information about the POBox.
POBoxType	The regional word used in place of "PO Box" in UK addresses.
PostalCode	The postal code of an address. The format of the postal code differs between countries.
CompleteLocality	This contains the Locality element, the Dependent Locality element and the Double Dependent Locality element. If outputted, they will each be separated with a new line.
Locality	The Locality element contains the postal town of the address being returned.
DependentLocality	A Dependent Locality element is sometimes added to an address to give a more specific location.
DoubleDependentLocality	A very specific locality, for example a hamlet or industrial estate.
Province	A Province address element is a territorial division within a country, almost always an administrative division.
PostalCountry	The Country Address Element.
MotherCountry	Parent country; part of another country's commonwealth. For instance, France is the Mother Country of Guadeloupe.

## Formatted Address Elements

The formatted address elements for Partner Sourced datasets are stored within the data files. To accommodate the differences in address layouts between countries a special set of variable address elements can be used in addition to the elements listed above.

### FormattedLineN

The FormattedLine1 to FormattedLine10 elements represent each line of a normal address layout, and will vary according to the country the address is from.

For example, the address layout:

FormattedLine1  
FormattedLine2

might return four address elements for an Austrian address, for example:

Rudolfstraße 55  
4040 LINZ DONAU

but only three address elements for a Hong Kong address, for example:

10 Mei Lai Rd.  
LAI CHI KOK

### DeliveryAddressLineN

The DeliveryAddressLine1 to DeliveryAddressLine6 elements are similar in functionality to the FormattedLine elements. However, they only contain premises and street information formatted according to the local postal standards.

DeliveryAddressLine elements therefore must be combined with fixed address elements to create a complete address.

An example address layout using DeliveryAddressLine elements could look like this:

DeliveryLineAddress  
1  
DeliveryLineAddress  
2Locality



## Example Addresses

If you are using Partner Sourced datasets with Pro Web 6.73 or later, it is possible to return example addresses to test your address layouts and formats. Example addresses are available for the following datasets:

Argentina  
Austria  
Brazil  
Bulgaria  
China  
Croatia  
Cyprus  
Czech Republic  
Greece  
Hong Kong  
Hungary  
Iceland  
India  
Italy  
Japan  
Malta  
Mexico  
Poland  
Portugal  
Russia  
South Korea  
Ukraine

See the Pro Web Integration Guide and Technical Reference Guides for more information on using example addresses.

## About DataPlus Information

You can configure your Experian products to use the DataPlus sets that are available for GLO data. Please refer to the relevant section of the product documentation for information on configuring Experian products to return DataPlus information.

Each DataPlus set is divided into one or more items. Experian products can be configured to return these items via the Configuration Editor (using the element name) or the configuration file (using the code name). This section details the DataPlus sets currently available for GLO address data.

### DataPlus Sets for GLO Address Data

The following DataPlus sets are available with all GLO datasets:

#### Address Field Result

This DataPlus set returns detailed match information for returned addresses, indicating which address elements were matched in the search, and to what level. The DataPlus information is generated by the search process - it is not supplied in a separate file. The Address Field Result DataPlus set contains the following elements:

Element	Code	Description
Matching Overview	QADPMatchingOverview	An 8 digit number indicating the matching action performed on certain address elements. See <a href="#">"Matching Overview Format" on page 18</a> .
Validation Status	QADPValidationStatus	A short code summarising the result of the verification process for the whole address. See <a href="#">"Validation Status Format" on page 19</a> .
Element Match Status	QADPElementMatchStatus	An 8 digit number indicating the level of matching made for certain address elements. See <a href="#">"Element Match Status Format" on page 19</a> .
Element Result Status	QADPElementResultStatus	An 8 digit number indicating the action performed on certain address elements to produce the result. See <a href="#">"Element Result Status Format" on page 20</a> .

#### Matching Overview Format

The 8 digits of the Matching Overview field correspond to the following address elements:

1	Postal Code
2	Locality
3	Province
4	Street
5	Building Number
6	PO Box
7	Building
8	Organisation

Each digit takes one of the following three values:

- 0 The address element was not matched in the dataset and was not retained. This will be returned when the input element cannot be matched, or for elements not supplied in the input that are not part of the returned address.
- 1 The address element was not matched in the dataset but the input was retained. This might be returned when there is no data for that element available in the dataset.
- 2 The address element was matched to information in the dataset.

For example, a Matching Overview result of "22221000" would indicate the following:

- The Postal Code, Locality, Province and Street elements were all matched to information in the dataset.
- The Building Number element was not matched but the input was retained.
- The PO Box, Building and Organisation elements were not matched and no information was retained.

### Validation Status Format

The Validation Status field can take one of the following values:

- V The input address was verified as correct.
- C The input address was verified but required correction.
- P3 The input address cannot be corrected, but is likely to be deliverable.
- P4 The input address cannot be corrected, but may be deliverable.

There are further Validation Status codes when using the Partner Sourced Data with the Single Line engine:

- Q3 Suggestions are available.
- Q2 Suggested address is not complete (enter more information).
- Q1 No suggestions are available. A query against the database was performed but yielded no results.
- N5 Insufficient information to generate suggestions. No query against the database was performed.
- N4 Validation method not yet called (after parsing operation).
- N3 No validation performed because country not unlocked.
- N2 No validation performed because reference database not found or not available.
- N1 No validation performed because country was not recognised.

### Element Match Status Format

The 8 digits of the Element Match Status field correspond to the following address elements:

- 1 Postal Code
- 2 Locality
- 3 Province
- 4 Street
- 5 Building Number
- 6 PO Box
- 7 Building
- 8 Organisation

Each digit takes one of the following five values:

0	Empty
1	Not found
2	Not checked (no reference data or no chance of success)
3	Matched with errors
4	Matched without errors

### Element Result Status Format

The 8 digits of the Element Result Status field correspond to the following address elements:

1	Postal Code
2	Locality
3	Province
4	Street
5	Building Number
6	PO Box
7	Building
8	Organisation

Each digit takes one of the following eight values:

0	Empty
1	Not checked
2	Not checked but standardised
3	Checked and corrected (by a change or insertion)
4	Verified but changed (for example by matching an alias or old name)
5	Verified but standardised
6	Verified and unchanged
7	No value given because of multiple matches

## GeoCoding

This DataPlus set returns geocoding information for the given address.

The GeoCoding DataPlus set contains the following elements:

Element	Description
Latitude	Latitude of the address (WGS84 format)
Longitude	Longitude of the address (WGS84 format)
Status	The status of the found geocode information. The value is a 4-digit alpha-numeric code. The return values and their definitions are detailed in the table below.

The Status values and their definitions:

EGCU	GeoCoding database not unlocked
EGCN	GeoCoding database not found
EGCC	GeoCoding database corrupt
EGC0	No Geocode available
EGC4	Geocode with partial postal code level accuracy (e.g. 795xx)
EGC5	Geocode with postal code level accuracy
EGC6	Geocode with locality level accuracy
EGC7	Geocode with street level accuracy
EGC8	Geocode with house number level accuracy (interpolated approximation)
EGC9	Geocode with house number (roof top) level accuracy

# Using This Data

This chapter provides search tips and other product-specific information when using Pro, Pro Web.

These searches are accurate at the time of data release. However, search results may differ depending on the data release you are using.

## With Pro Web

### Scenarios

The following table indicates the relevant search examples for each Pro Web scenario and search engine that supports GLO address data.

Scenario	Search engine	For search examples, see:
Web: Address Capture	Single Line flattened	Single Line search examples on <a href="#">page 22</a> .
Web: Address Verification	Verification	Verification search examples on <a href="#">page 23</a> .
Intranet: Rapid Addressing - Single Line	Single Line hierarchical	Single Line search examples on <a href="#">page 22</a> .
Intranet: Rapid Addressing - Standard	Single Line hierarchical	Single Line search examples on <a href="#">page 22</a> .

### Search Examples: Single Line

Users of Pro Web v6.70 or later can use the Single Line engine to capture an address using Partner Sourced data.

The Single Line engine can theoretically be used with any Partner Sourced dataset. However, Experian recommends only using Full Street or Limited Street datasets for consistent results. See "[About This Data](#)" on [page 5](#) for more information about address detail in the datasets.

When using Single Line searching with Partner Sourced data, it is important to note that a prompt set must be specified, and that the prompt set must not use the `formattedaddresslineN` field.

Below are examples of using the Single Line engine:

Prompt Set	Example
OneLine	Enter the House Number and Street: <b>Columbusgasse 3</b> A picklist is returned. Select the first entry in the picklist and the correct address is returned: Columbusgasse 3 3741 Pulkau Austria
Optimal (Using Address Capture)	Enter the house number and street into the Street and House fielded prompt: <b>Montiel Coronel 501</b> Then enter the postcode into the Postcode fielded prompt: <b>1713</b> The correct address is returned: MONTIEL CORONEL 501 1713 ASUNCIÓN Paraguay

## Search Examples: Verification

Users of Pro Web v6.20 or later can use address verification functionality to verify a customer's address once they have typed it in full into a web form.

The following table provides a list of example searches and the Verify level they return.

Verify level	Example
Verified	<b>ul. Kilinskiego 53</b> <b>32-410 DOBCZYCE</b> <b>Poland</b> This search brings back a verified address with the verify level of "Verified".
InteractionRequired	<b>Volgaweg 11</b> <b>301 AKRANEJI</b> <b>Iceland</b> This search brings back a verify level of "InteractionRequired" because the locality was not correct and, although there was only one match, the address requires verification from the user.
VerifiedStreet*	<b>r tiburcio frota</b> <b>fortaleza</b> <b>60130-301</b> <b>Brazil</b> This search brings back a verify level of "VerifiedStreet" because the premises information cannot be verified against the dataset.
VerifiedPlace*	<b>12293 kadiogo</b> <b>ouagadougou</b> <b>Burkina Faso</b> This search brings back a verify level of "VerifiedPlace" because the premises and street information cannot be verified against the dataset.
Multiple	<b>5 jln.semberun</b> <b>JAKARTA 13720</b> <b>Indonesia</b> This search brings back a verify level of "Multiple" because the street name is not correct and matches more than one street. Further interaction is required from the user.
Non	<b>missing street</b> <b>unknown town</b> <b>Thailand</b> This search brings back a verify level of "None" as the address does not exist in the data.

\* These verify levels will not be returned if the `VerificationLevels` setting is set to "Legacy". For more information about verification levels and configuration settings, see the Pro Web documentation.

For more information about the Verification engine, refer to the Address Verification section of the Pro Web Integration Guide.